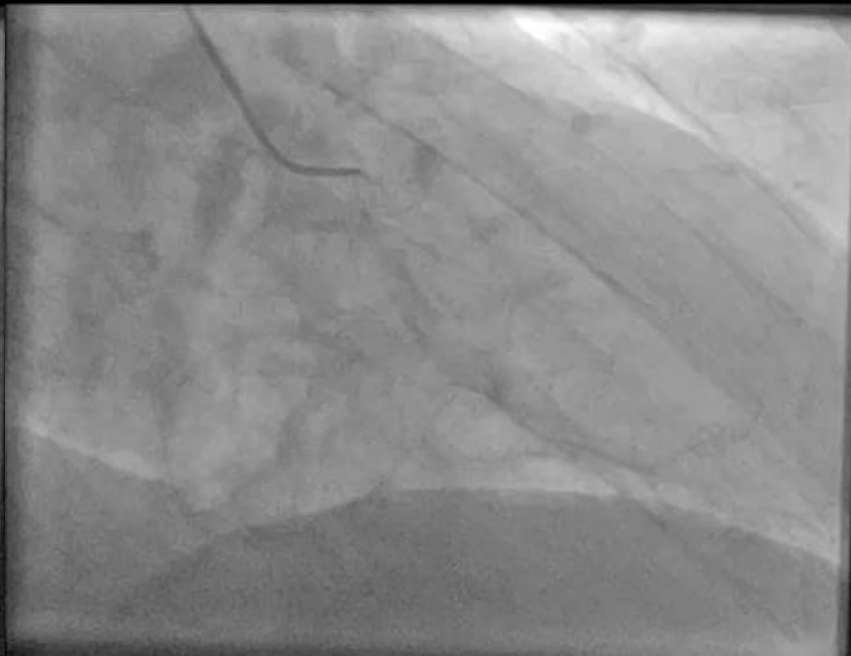
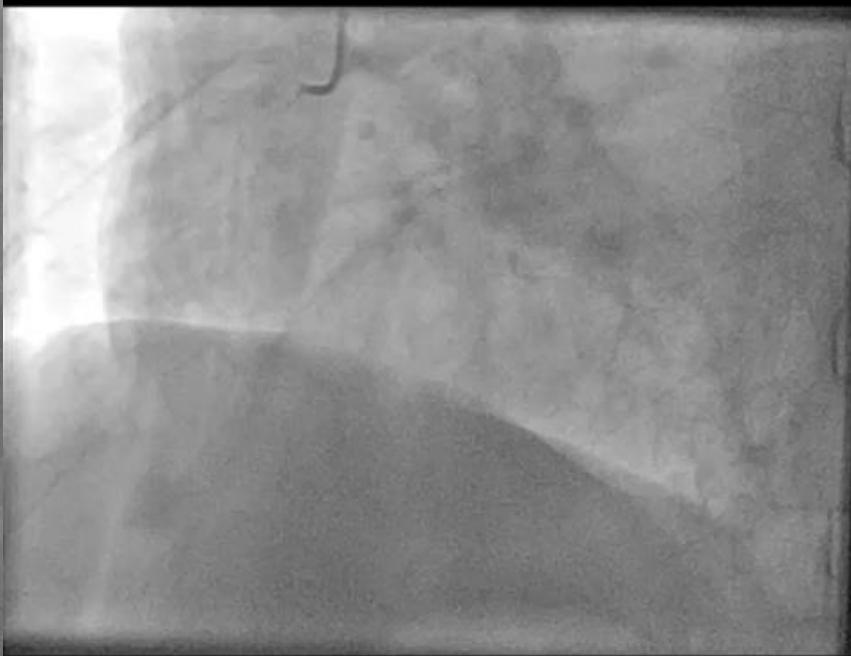
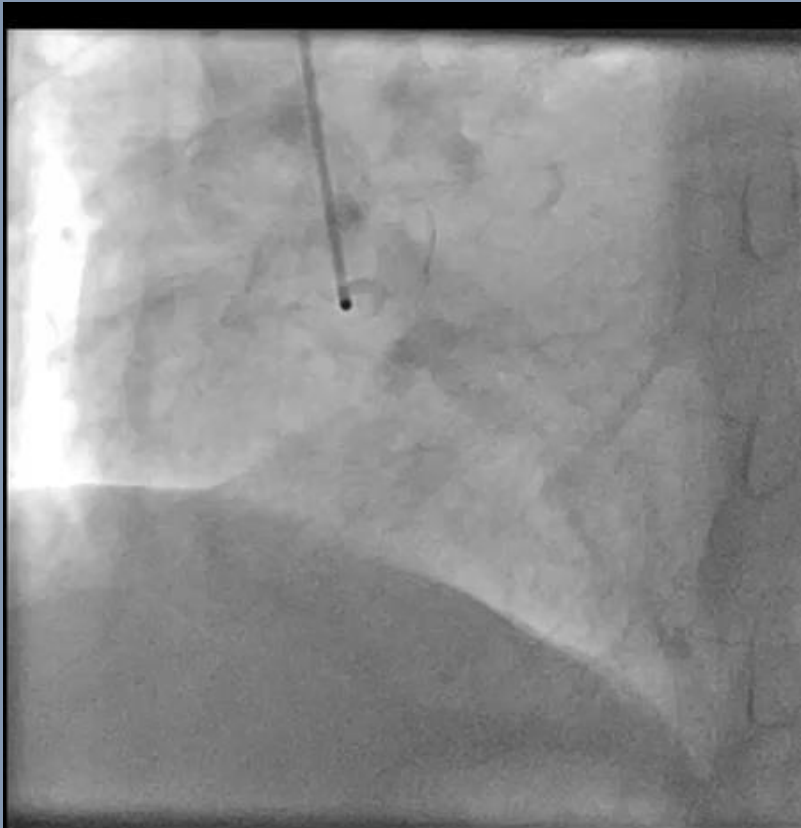
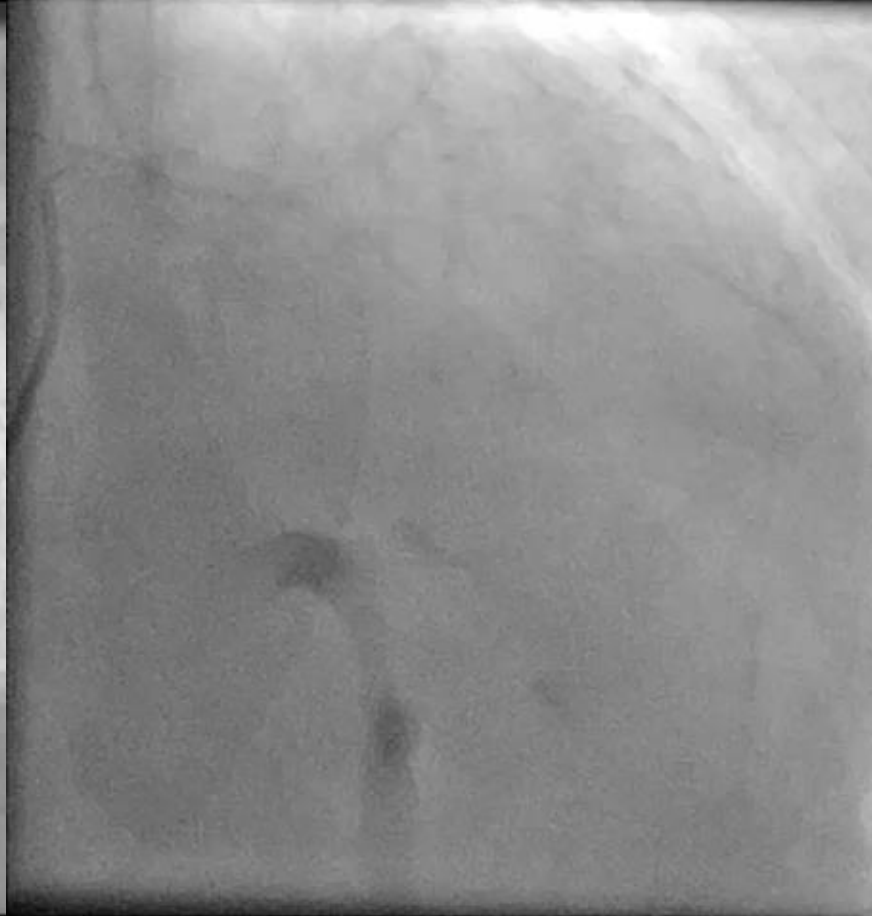
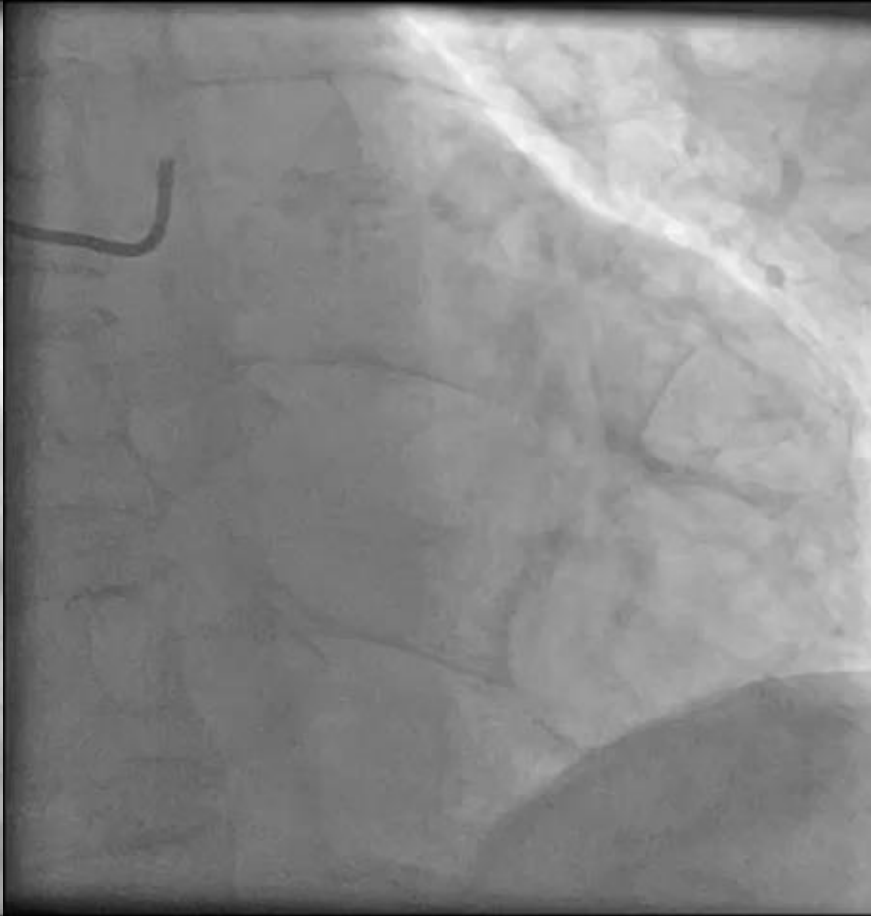
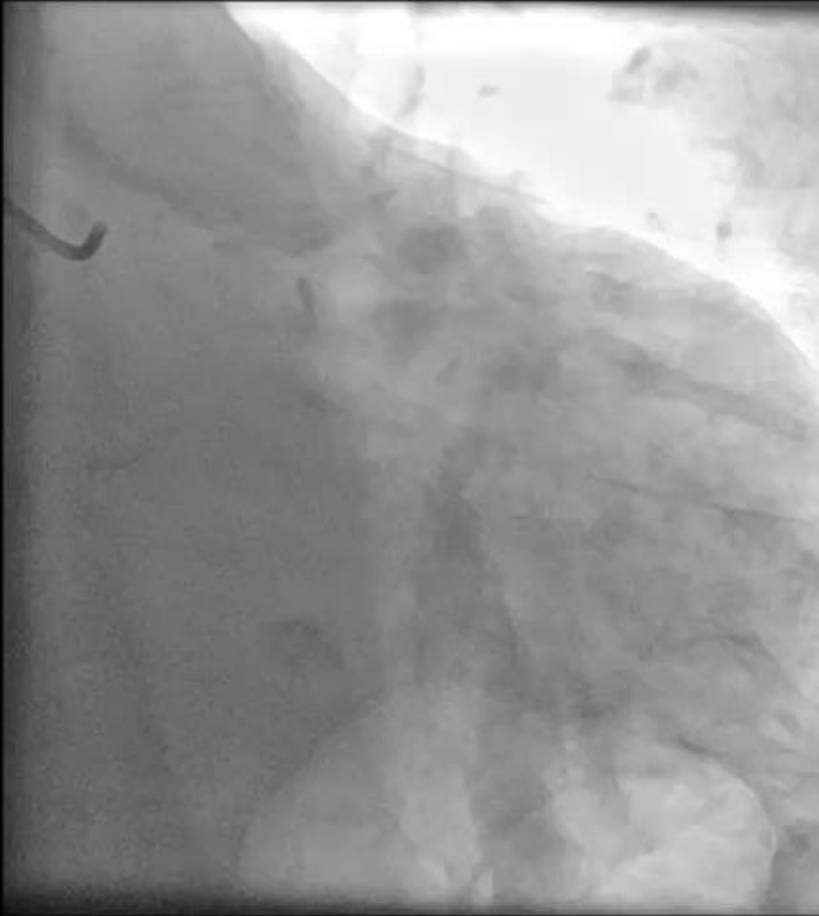


COMPLEX BIFURCATION
CASE, BUT NOT ONLY.
WHEN YOU DON'T
WORK AT HOME

Marin POSTU,
IECVD "C.C.Iliescu"
Bucharest,
ROMANIA

- 83 yers old male patient
- Unstable Angina
- Hypertension, 240/120 mmHg in crisis
- EF 60%
- Prostatic Adenocarcinoma





- Tortuous RCA with unfriendly origin
- Distal LM lesion with unclear anatomy
- Calcified stenosis on LAD with important diagonal branch
- Severe stenosis on origin of the Circumflex
- NO Imaging
- NO Support Devices

- Short DAPT
- Bifurcation friendly
- Good compliance
- Good apposition

Resolute Onyx is the first DES CE indicated for 1-month DAPT in high bleeding risk (HBR) patients

Medtronic

COMPLEX PCI PATIENTS IN THE ONYX ONE CLEAR SUB-ANALYSIS MET AT LEAST ONE CHARACTERISTIC³:

- 3 vessels treated
- ≥ 3 lesions treated
- Total stent length > 60 mm
- Bifurcation with ≥ 2 stents implanted
- Use of any atherectomy device
- Left main
- Surgical bypass graft^{††}
- Chronic total occlusion

DESIGNED DIFFERENTLY TO PROMOTE FAST HEALING⁴

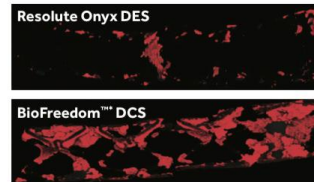
Single-wire design

Increases conformability and apposition⁵



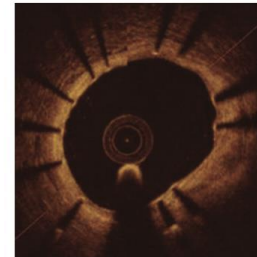
BioLinx™ polymer

Offers superior thromboresistance⁶



Less fluorescence (red) is better

Combined, these elements promote fast healing evidenced by nearly 90% strut coverage at 30 days.⁷



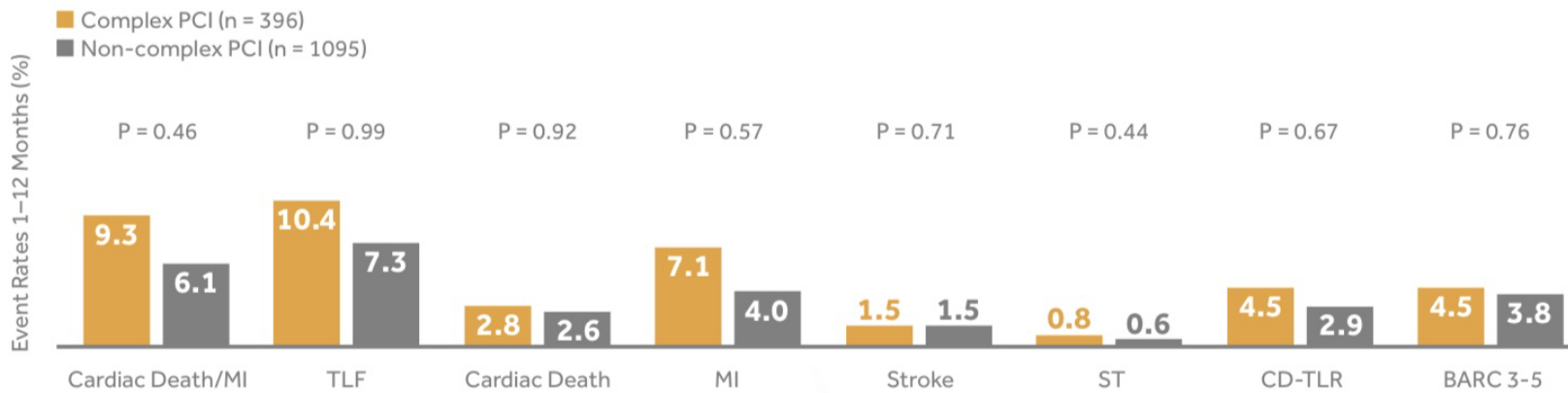
CE MARK INDICATIONS

1-month DAPT in HBR patients

- Diabetes mellitus
- In-stent restenosis (ISR)
- Multivessel disease
- Chronic total occlusions (CTO)
- Acute coronary syndrome (ACS)
- Total occlusions (TO)
- Acute myocardial infarction (AMI)
- Left main (LM)
- Unstable angina (UA)
- Small vessel (SV)
- Bifurcation lesions

NO DIFFERENCE IN SAFETY AND EFFICACY DESPITE INCREASED LESION COMPLEXITY**

Patients with increased lesion complexity are associated with higher ischemic risk. This subanalysis from the Onyx ONE Clear analysis assessed outcomes in complex versus non-complex PCI patients.



OPTIMISED FOR COMPLEX PCI

- Truly rounded struts for easier side branch access²
- Platinum-iridium core for enhanced visibility²
- 4.5 and 5.0 mm diameters designed specifically for extra-large vessels like left main bifurcations²



TECHNICAL SPECIFICATIONS

Characteristic per stent diameter	2.00, 2.25, 2.50	2.75, 3.00	3.50, 4.00	4.50, 5.00
Strut dimensions¹ (in/ μ m)	0.0032/81	0.0032/81	0.0032/81	0.0036/91
Crowns	6.5	8.5	9.5	10.5
Maximum expansion (mm) — MSID*	3.5[†]	4.0[†]	5.0[†]	6.0[†]
Maximum side branch diameter¹ (mm)	3.7	3.9	3.8	4.9
Core/outer material	Platinum-iridium/cobalt alloy			
Fusion pattern	Every 4th crown fused	Every 5th crown fused	Every 4th crown fused	Every 4th crown fused
	